

Design Features

Housing: Four heavy gauge extruded aluminum sections interlock to form the cylinder housing. Three sections are welded to cast top cap and one section is welded to cast lens frame.

Lens Assembly: Clear heat tempered glass lens is sealed in regressed cast aluminum frame. The frame is welded to one section of housing which easily slides down for relamping by the removal of one screw. A safety chain secures frame.

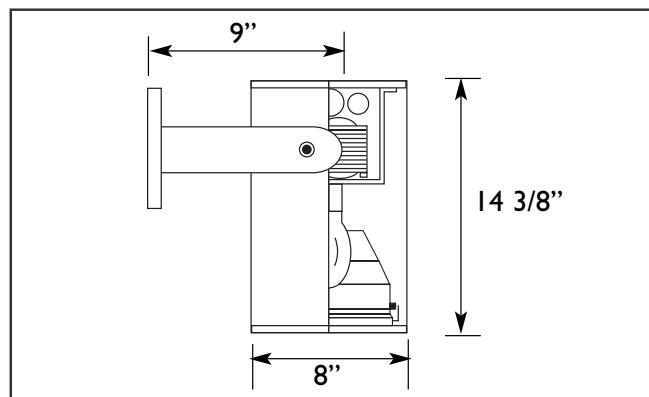
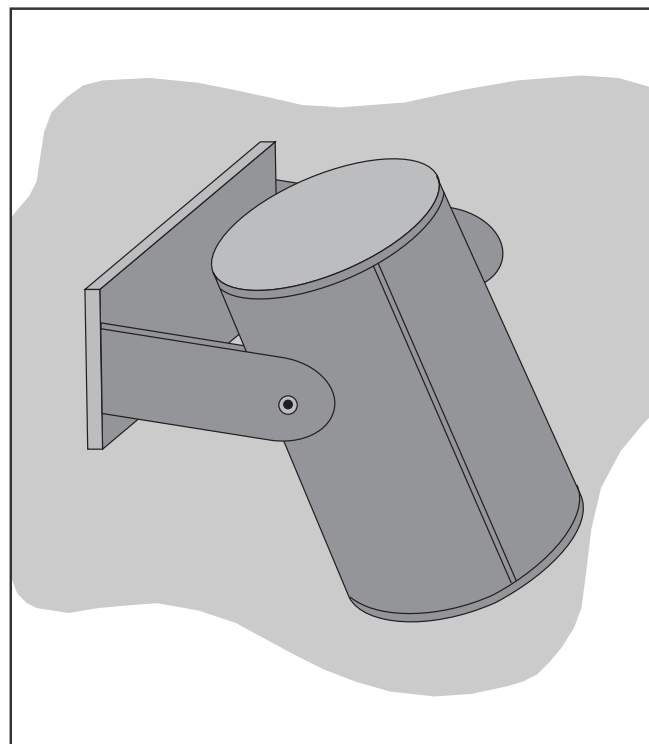
Optical System: Spun aluminum reflector with specular finish are attached to cast frame. Reflector provides a smooth symmetrical distribution.

Mounting Bracket: Heavy gauge aluminum yoke bracket allows vertical adjustment up to 90°. Two flat head screws secure yoke to the housing. One 1/4-20 stainless steel set screw secures fixture in horizontal position.

Ballast/Lamp Assembly: All HID ballast shall have a high power factor and suitable for -20° F operation. The ballast module is easily removable for maintenance. The lamp socket shall be porcelain medium base pulse-rated and securely mounted to housing.

Finish: Polyester powder coating on all metal parts. Color to be specified.

Listing: Luminaire is ETL listed for wet locations.



Specification Guide

Series	Wattage/Lamp	Volts	Options	Finish
YRY	100w/MV = 810V	120	1F = Single Fuse	BZ = Bronze
	70w/HPS = 807S	208	2F = Double Fuse	BK = Black
	100w/HPS = 810S	240	PH = Button Cell	WH = White
	70w/MH = 807H	277	FL = Fresnel Lens	SL = Silver
	100w/MH = 810H	480		CC = Custom Color

Example: 100 Watt, Metal Halide, 120 Volts, Single Fuse, Bronze
YRY-810H-120/1F/BZ