

Design Features

Housing: The heavy duty hydroformed aluminum dome supports ballast and slips over 2-3/8" pole tenon. Spun aluminum shroud is secured to a tier of louvers with (3) internal threaded rods. Top cap is easily removed to access lamp.

Dome Cap: The rugged hydroformed aluminum dome has an acrylic window installed to distributed accent light. Each end of the acrylic is secured to a cast ring. The upper ring is welded to cap and lower ring is secured to the housing with three stainless steel fasteners.

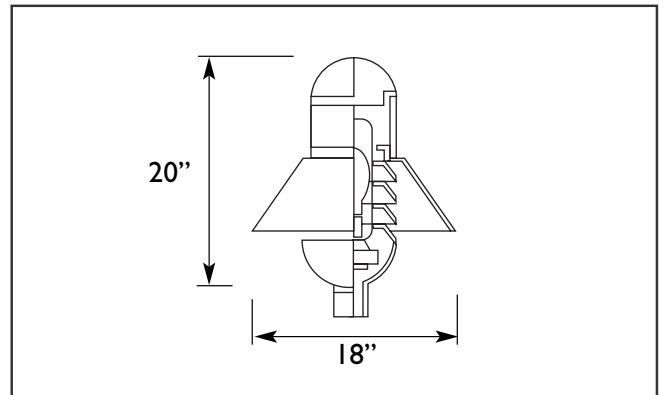
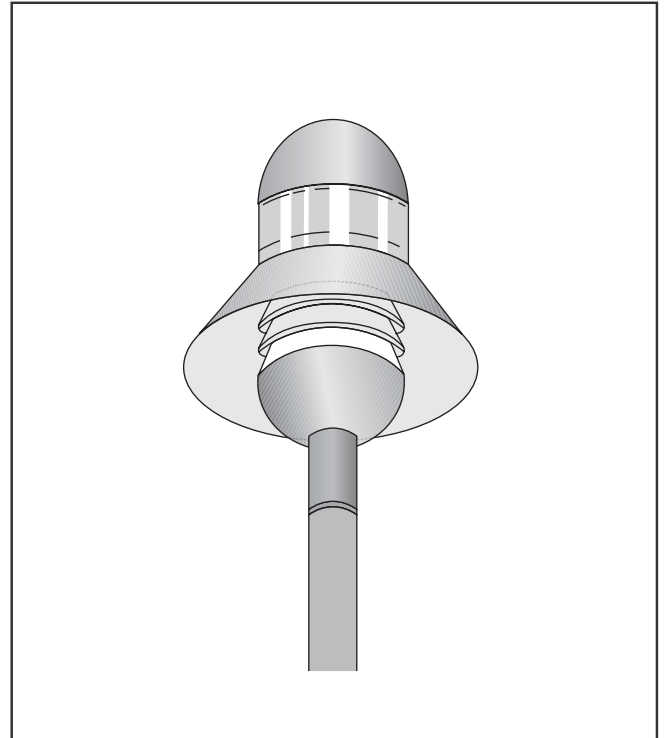
Enclosure: A clear acrylic seamless enclosure is installed in the top cap for accent lighting. Threaded clear glass lens covers lamp.

Slip Fitter: Extruded aluminum fitter is internally welded to dome and is secured to tenon with (3) stainless steel fasteners.

Ballast/Lamp Assembly: All ballast shall be high power factor and suitable for -20° F operation. The ballast is mounted in the lower dome and is secured with two screws. Lamp sockets shall be porcelain medium base pulse-rated and mounted to housing.

Finish: Polyester powder coating on all metal parts. Color to be specified.

Listing: Luminaire is ETL listed for wet locations.



Specification Guide

Series	Wattage/Lamp	Volts	Options	Finish
VK-8	70w/HPS = 07S	120	1F = Single Fuse 2F = Double Fuse PH = Button Cell	BZ = Bronze BK = Black WH = White SL = Silver CC = Custom Color
	100w/HPS = 10S	208		
	150w/HPS = 15S	240		
	70w/MH = 07H	277		
	100w/MH = 10H	480		
	175w/MH = 17H			

Example: 100 Watt, Metal Halide, 120 Volts, Single Fuse, Bronze
VK-810H-120/1F/BZ